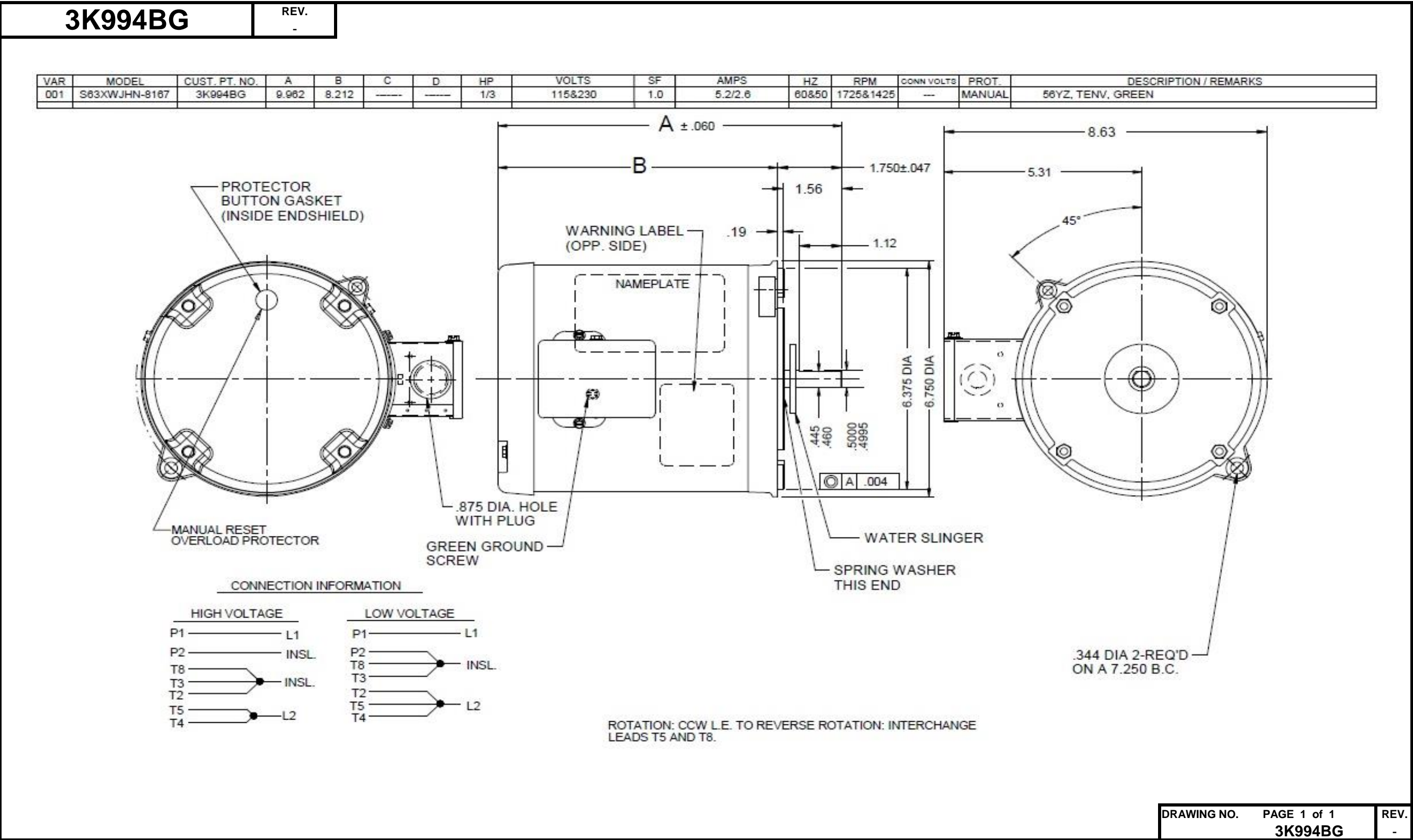


Dimensional Drawing



Performance Data



3K994BG

REV.
-

MOTOR PERFORMANCE

HP:	1/3HP							
Poles:	4P							
No. of Speeds:	1							
Volts:	115/230	115	115	230	230			
HZ:	60/50	60	50	60	50			
Service Factor:	1							
Efficiency:	@ Rated Load	66.8	66.2	66.8	66.5			
Power Factor:	@ Rated Load	63.3	57.8	63.4	57.4			
Amps:	@ No Load							
	@ Rated Load	5.1	5.7	2.5	2.89			
	@ Service Factor	N/A	N/A	N/A	N/A			
	@ Locked Rotor	46.9	50.5	21.1	23			
RPM:	@ Rated Load	1748	1456	1747	1457			
Ambient (°C):	40							
Altitude (FASL):								
Torques:	Breakdown	47.3	63.1	47.5	63.7			
	Locked Rotor	29.6	39.6	30.2	39.1			
	Pull-Up	29.6	39.6	30	39.1			
	Rated Load	16.2	19.6	16.2	19.6			
	Service Factor	N/A	N/A	N/A	N/A			
Watts:	Rated Load	376	383	376	381			
KVA Code:								
Temperature Rise:	@ Rated Load	56.5	74.7	55.9	64.5			
	@ Service Factor	N/A	N/A	N/A	N/A			
Thermal Protector:	Trip Temp (°C)	141.3	143.1	146.8	148.3			
Winding Material:	Start (Auxiliary)	Cu						
	Run (Main)	Cu						
Capacitor(s):	Start (MFD / Volts)	N/A						
	No. of Start Capacitors							
	Run (MFD / Volts)	N/A						
	No. of Run Capacitors							

LOW SPEED PERFORMANCE DATA:

HP:								
Poles:								
Volts:								
HZ:								
Efficiency:	@ Rated Load							
Power Factor:	@ Rated Load							
Amps:	@ No Load							
	@ Rated Load							
	@ Service Factor							
	@ Locked Rotor							
Torques:	@ Rated Load							
	Locked Rotor							
	Pull-Up							
	Rated Load							
	Service Factor							
Watts:	@ Rated Load							
Temperature Rise:	@ Rated Load							
	@ Service Factor							

DRAWING NO. PAGE 1 of 1
3K994BG

REV.
-

Dayton Electric Mfg. Co. Lake Forest, IL 60045 USA

Performance Data



3K994BG		REV. -															
Dayton Manufacturing Company																	
Motor Description					Test Conditions												
Model:		S063JHN816701 3K994BG			Test Type:		Start		Run Cap: 0								
Motor ID:		1			Test Number:		5		Start Cap: 0µfd								
Poles:		4			Poles:		4		Environment:								
Volts:		115/230			Volts:		115		Tested: 1/20/2003 5:50:05 PM								
Frequency:		60/50			Hz:		60		Tested By: Mitchell (Mitch), L.								
HP:		1/3			Rotation:				Gear Ratio: 1:1								
Speed:		1725/1425			Special Cond:				Bearing Friction: -0.48 Oz-Ft								
Phase:		1			Speed Conn:				Windage Torque: -1.16 Oz-Ft								
Protector:		CED4761			TestBoard:		Amps Performance		Fixture #3								
Special Points		Vline(V)		Iline(A)		Watts		RPM		Tq(Oz-ft)		HP		Eff(%)		PF(%)	
PUT OZ-FT		115.0		46.95		4062		1		29.65		0.000		0.0		75.2	
		115.0		46.95		4062		1		29.65		0.000		0.0		75.2	
		115.0		46.88		4058		32		29.94		0.012		0.2		75.3	
		115.0		46.72		4042		186		31.74		0.070		1.3		75.2	
		115.0		46.38		4022		338		34.51		0.139		2.6		75.4	
		115.0		45.96		3990		479		37.49		0.214		4.0		75.5	
		115.0		45.57		3952		606		38.39		0.277		5.2		75.4	
		115.0		45.30		3939		720		36.23		0.311		5.9		75.6	
		115.0		44.71		3913		826		38.68		0.380		7.3		76.1	
		115.0		43.98		3869		923		41.73		0.458		8.8		76.5	
		115.0		43.19		3816		1012		44.65		0.538		10.5		76.8	
		115.0		42.35		3755		1092		46.36		0.603		12.0		77.1	
		115.0		41.46		3690		1166		46.98		0.652		13.2		77.4	
BDT OZ-FT		115.0		41.04		3656		1197		47.41		0.676		13.8		77.5	
		115.0		32.61		2715		1233		36.38		0.534		14.7		72.4	
		115.0		19.63		1669		1294		40.41		0.622		27.8		73.9	
		115.0		18.26		1566		1351		42.94		0.691		32.9		74.6	
		115.0		17.25		1505		1404		44.64		0.746		37.0		75.9	
		115.0		16.24		1439		1451		45.79		0.791		41.0		77.1	
		115.0		15.19		1366		1493		46.65		0.829		45.3		78.2	
		115.0		14.12		1285		1532		46.46		0.847		49.2		79.1	
		115.0		13.03		1195		1567		45.41		0.847		52.9		79.7	
		115.0		11.94		1098		1598		43.64		0.830		56.4		80.0	
		115.0		10.83		996		1628		40.81		0.791		59.2		79.9	
		115.0		9.71		888		1654		37.87		0.746		62.7		79.5	
		115.0		8.67		782		1678		34.02		0.679		64.8		78.5	
		115.0		7.61		668		1701		29.68		0.601		67.2		76.3	
		115.0		6.56		548		1723		24.33		0.499		67.9		72.6	
1725 RPM		115.0		6.47		538		1725		23.84		0.490		67.9		72.2	
21.9 OZ-FT		115.0		6.16		497		1732		21.90		0.452		67.8		70.1	
		115.0		5.61		425		1744		18.51		0.384		67.4		66.0	
16.2 OZ-FT		115.0		5.29		379		1751		16.20		0.338		66.4		62.4	
		115.0		4.82		307		1763		12.36		0.259		63.1		55.4	
		115.0		4.22		178		1783		5.08		0.108		45.2		36.7	
0.333 OZ-FT		115.0		4.04		98		1795		0.33		0.007		5.1		21.0	
		115.0		4.03		92		1796		0.00		0.000		0.0		19.7	

DRAWING NO.

PAGE 1 of 8

3K994BG

REV.

-

DRAWING NO.	PAGE 1 of 8	REV.
	3K994BG	-

Dayton Electric Mfg. Co. Lake Forest, IL 60045 USA

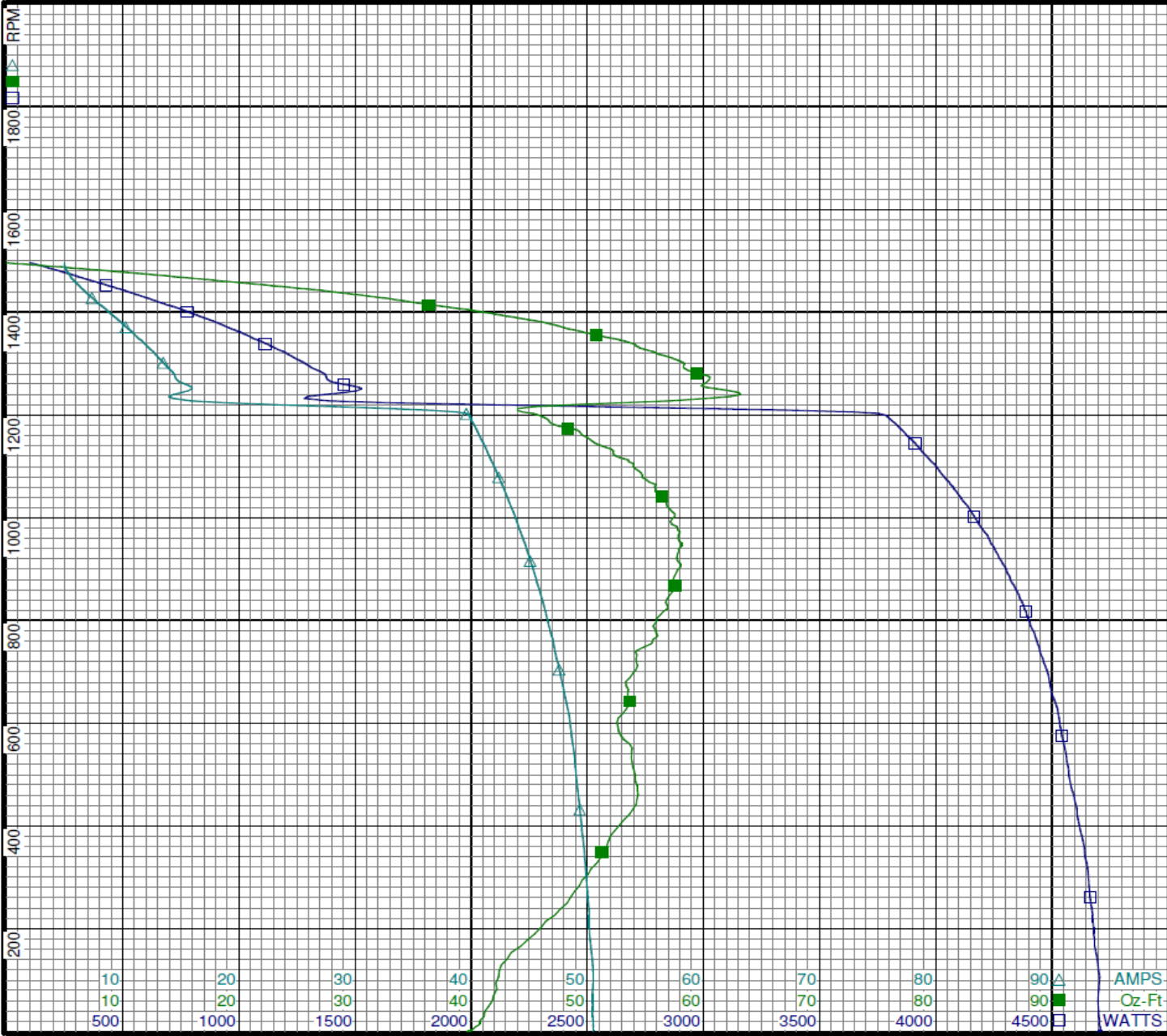
Performance Data



3K994BG

REV.

-



Curve Descriptions:
Motor(1) Test 11 Start 115V 50 Hz 4P

- SPEED vs WATTS
- SPEED vs TORQUE
- △ SPEED vs ILine

Motor Ratings:
(1) S063JHN816701 3K994BG

DRAWING NO.	PAGE 2 of 8	REV.
	3K994BG	-

Dayton Electric Mfg. Co. Lake Forest, IL 60045 USA

Performance Data



3K994BG		REV. -						
Dayton Manufacturing Company								
Motor Description				Test Conditions				
Model:	S063JHN816701 3K994BG			Test Type:	Run	Run Cap:	0	
Motor ID:	1			Test Number:	6	Start Cap:	0µfd	
Poles:	4			Poles:	4	Environment:		
Volts:	115/230			Volts:	115	Tested:	1/20/2003 5:59:55 PM	
Frequency:	60/50			Hz:	60	Tested By:	Mitchell (Mitch), L.	
HP:	1/3			Rotation:		Gear Ratio:	1:1	
Speed:	1725/1425			Special Cond:		Bearing Friction:	-0.47 Oz-Ft	
Phase:	1			Speed Conn:		Windage Torque:	-1.12 Oz-Ft	
Protector:	CED4761			TestBoard:	Amps Performance	Fixture #3		
Special Points	Vline(V)	Iline(A)	Watts	RPM	Tq(Oz-ft)	HP	Eff(%)	PF(%)
0.333 OZ-FT	115.0	3.91	84	1790	0.00	0.000	0.0	18.7
	115.0	3.92	90	1789	0.33	0.007	5.4	20.0
	115.0	4.28	222	1770	7.83	0.165	55.4	45.1
	115.0	5.09	364	1750	15.69	0.327	66.9	62.3
16.2 OZ-FT	115.0	5.17	376	1748	16.20	0.337	66.8	63.3
21.9 OZ-FT	115.0	5.99	488	1731	21.90	0.451	69.0	70.8
1725 RPM	115.0	6.05	496	1729	22.35	0.460	69.2	71.2
	115.0	6.26	523	1725	23.61	0.485	69.2	72.6
	115.0	7.12	624	1708	28.10	0.572	68.3	76.2
	115.0	8.12	735	1687	32.54	0.653	66.3	78.7
BDT OZ-FT	115.0	9.18	844	1664	36.67	0.727	64.2	79.9
	115.0	10.31	956	1639	40.52	0.791	61.7	80.6
	115.0	11.40	1058	1612	42.96	0.825	58.1	80.7
	115.0	12.47	1152	1584	45.14	0.851	55.1	80.4
	115.0	13.55	1247	1552	46.76	0.864	51.7	80.1
	115.0	14.58	1328	1518	47.13	0.852	47.8	79.2
	115.0	14.86	1349	1507	47.33	0.849	47.0	78.9
	115.0	15.59	1402	1481	47.11	0.831	44.2	78.2
	115.0	16.55	1466	1441	46.45	0.797	40.5	77.1
	115.0	17.49	1526	1397	45.10	0.750	36.7	75.9
	115.0	18.36	1576	1350	43.15	0.693	32.8	74.7
	115.0	19.18	1618	1299	40.92	0.633	29.2	73.4
	115.0	19.94	1653	1243	38.27	0.566	25.6	72.1
	115.0	20.66	1683	1182	35.26	0.496	22.0	70.9
	115.0	21.31	1707	1117	31.94	0.425	18.6	69.7
	115.0	21.90	1723	1047	28.20	0.351	15.2	68.4
	115.0	22.44	1736	970	24.52	0.283	12.2	67.3
	115.0	22.93	1746	889	20.73	0.219	9.4	66.2
	115.0	23.36	1750	800	16.43	0.156	6.7	65.2
	115.0	32.02	2631	707	23.04	0.194	5.5	71.4
	115.0	45.50	3927	612	35.47	0.258	4.9	75.1
	115.0	46.10	3992	505	37.80	0.227	4.2	75.3
	115.0	46.39	4023	388	35.46	0.164	3.0	75.4
	115.0	46.59	4042	265	32.99	0.104	1.9	75.4
	115.0	46.61	4042	134	30.66	0.049	0.9	75.4

DRAWING NO.

PAGE 3 of 8

3K994BG

REV.
-

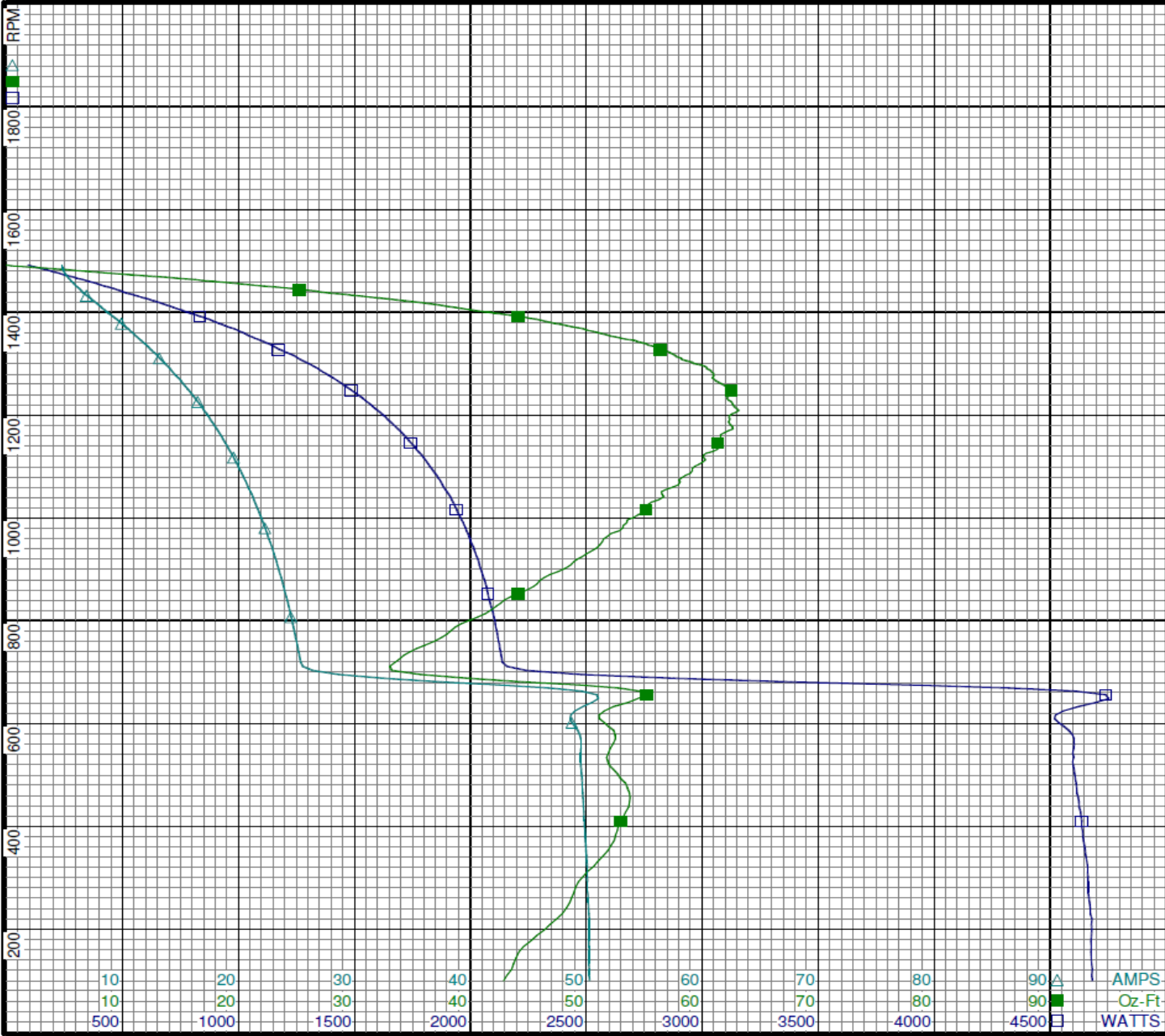
Dayton Electric Mfg. Co. Lake Forest, IL 60045 USA

Performance Data



3K994BG

REV.
-



Curve Descriptions:
Motor(1) Test 12 Run 115V 50 Hz 4P

□ SPEED vs WATTS
■ SPEED vs TORQUE
△ SPEED vs ILine

Motor Ratings:
(1) S063JHN816701 3K994BG

DRAWING NO.	PAGE 4 of 8	REV.
	3K994BG	-

Dayton Electric Mfg. Co. Lake Forest, IL 60045 USA

Performance Data



3K994BG		REV. -								
Dayton Manufacturing Company										
Motor Description					Test Conditions					
Model:		S063JHN816701 3K994BG			Test Type:		Start		Run Cap: 0	
Motor ID:		1			Test Number:		8		Start Cap: 0µfd	
Poles:		4			Poles:		4		Environment:	
Volts:		115/230			Volts:		230		Tested: 1/20/2003 6:46:55 PM	
Frequency:		60/50			Hz:		60		Tested By: Mitchell (Mitch), L.	
HP:		1/3			Rotation:				Gear Ratio: 1:1	
Speed:		1725/1425			Special Cond:				Bearing Friction: -0.47 Oz-Ft	
Phase:		1			Speed Conn:				Windage Torque: -0.97 Oz-Ft	
Protector:		CED4761			TestBoard:		Amps Performance		Fixture #3	
Special Points		Vline (V)	Iline (A)	Watts	RPM	Tq (Oz-ft)	HP	Eff (%)	PF (%)	
		230.0	21.15	3808	0	30.29	0.000	0.0	78.3	
PUT OZ-FT		230.0	21.15	3803	3	30.06	0.001	0.0	78.2	
		230.0	21.12	3802	33	30.70	0.012	0.2	78.3	
		230.0	21.05	3789	183	33.00	0.072	1.4	78.3	
		230.0	20.91	3769	339	35.50	0.143	2.8	78.4	
		230.0	20.73	3741	480	37.54	0.215	4.3	78.5	
		230.0	20.56	3710	607	38.85	0.281	5.6	78.4	
		230.0	20.44	3703	722	38.89	0.334	6.7	78.7	
		230.0	20.18	3677	826	41.39	0.407	8.3	79.2	
		230.0	19.86	3639	924	45.04	0.495	10.2	79.7	
		230.0	19.50	3591	1012	47.44	0.572	11.9	80.1	
		230.0	19.13	3537	1092	49.34	0.642	13.5	80.4	
		230.0	18.73	3478	1167	50.74	0.705	15.1	80.7	
BDT OZ-FT		230.0	18.70	3473	1173	50.88	0.710	15.3	80.8	
		230.0	10.33	1754	1232	36.72	0.538	22.9	73.8	
		230.0	9.39	1587	1292	40.35	0.621	29.2	73.5	
		230.0	8.92	1538	1351	42.53	0.684	33.2	74.9	
		230.0	8.44	1477	1403	44.25	0.739	37.3	76.1	
		230.0	7.93	1410	1450	45.66	0.788	41.7	77.3	
		230.0	7.41	1334	1492	45.82	0.814	45.5	78.3	
		230.0	6.87	1249	1532	45.29	0.826	49.3	79.0	
		230.0	6.34	1163	1566	44.34	0.826	53.0	79.7	
		230.0	5.79	1066	1598	42.73	0.813	56.9	80.1	
		230.0	5.27	974	1626	40.18	0.778	59.6	80.3	
		230.0	4.74	868	1654	36.62	0.721	61.9	79.7	
		230.0	4.22	761	1678	33.32	0.666	65.3	78.4	
		230.0	3.73	655	1700	28.83	0.584	66.5	76.3	
		230.0	3.23	536	1723	23.71	0.486	67.6	72.3	
1725 RPM		230.0	3.17	521	1725	23.11	0.475	68.0	71.5	
21.9 OZ-FT		230.0	3.05	493	1730	21.90	0.451	68.3	70.4	
		230.0	2.76	415	1744	18.02	0.374	67.3	65.3	
16.2 OZ-FT		230.0	2.62	377	1750	16.20	0.338	66.8	62.5	
		230.0	2.36	290	1764	11.55	0.243	62.4	53.4	
		230.0	2.08	165	1784	4.57	0.097	43.9	34.6	
0.333 OZ-FT		230.0	2.01	97	1795	0.33	0.007	5.3	21.0	
		230.0	2.00	89	1796	0.00	0.000	0.0	19.3	
DRAWING NO. PAGE 5 of 8 REV.										
3K994BG -										

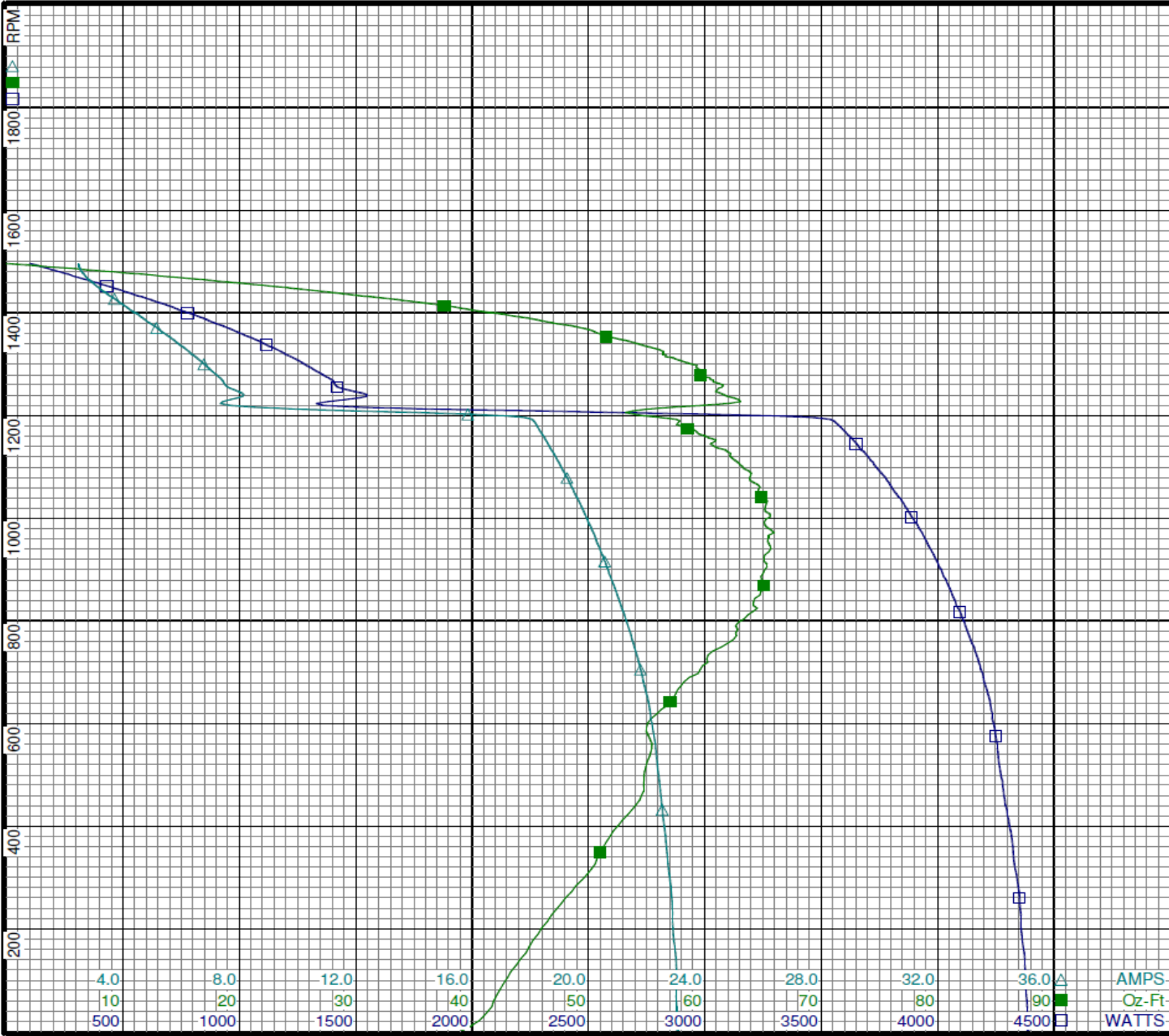
Dayton Electric Mfg. Co. Lake Forest, IL 60045 USA

Performance Data



3K994BG

REV.
-



Curve Descriptions:
Motor(1) Test 14 Start 230V 50 Hz 4P

- SPEED vs WATTS
- SPEED vs TORQUE
- △ SPEED vs ILine

Motor Ratings:
(1) S063JHN816701 3K994BG

DRAWING NO.	PAGE 6 of 8	REV.
	3K994BG	-

Dayton Electric Mfg. Co. Lake Forest, IL 60045 USA

Performance Data



3K994BG		REV.							
		-							
Dayton Manufacturing Company									
Motor Description				Test Conditions					
Model: S063JHN816701 3K994BG				Test Type: Run		Run Cap: 0			
Motor ID: 1				Test Number: 9		Start Cap: 0µfd			
Poles: 4				Poles: 4		Environment:			
Volts: 115/230				Volts: 230		Tested: 1/20/2003 7:18:26 PM			
Frequency: 60/50				Hz: 60		Tested By: Mitchell (Mitch), L.			
HP: 1/3				Rotation:		Gear Ratio: 1:1			
Speed: 1725/1425				Special Cond:		Bearing Friction: -0.48 Oz-Ft			
Phase: 1				Speed Conn:		Windage Torque: -1.10 Oz-Ft			
Protector: CED4761				TestBoard:		Amps Performance Fixture #3			
Special Points		Vline(V)	Iline(A)	Watts	RPM	Tq(Oz-ft)	HP	Eff(%)	PF(%)
		230.0	1.94	74	1790	0.00	0.000	0.0	16.6
0.333 OZ-FT		230.0	1.95	92	1788	0.33	0.007	5.2	20.5
		230.0	2.12	212	1771	7.27	0.153	53.9	43.5
		230.0	2.48	346	1752	14.72	0.307	66.3	60.5
16.2 OZ-FT		230.0	2.58	376	1747	16.20	0.337	66.8	63.4
		230.0	2.96	479	1732	21.42	0.442	68.8	70.4
21.9 OZ-FT		230.0	2.99	488	1730	21.90	0.451	69.0	70.9
1725 RPM		230.0	3.11	519	1725	23.32	0.479	68.9	72.5
		230.0	3.48	604	1711	27.00	0.550	67.9	75.4
		230.0	4.01	724	1689	32.33	0.650	67.0	78.4
		230.0	4.53	832	1666	36.41	0.722	64.8	79.8
		230.0	5.06	937	1642	39.57	0.774	61.6	80.5
		230.0	5.63	1044	1615	42.84	0.823	58.8	80.6
		230.0	6.17	1141	1587	44.93	0.849	55.5	80.3
		230.0	6.70	1229	1556	46.09	0.853	51.8	79.7
		230.0	7.24	1315	1521	46.93	0.850	48.2	78.9
BDT OZ-FT		230.0	7.60	1369	1497	47.57	0.848	46.2	78.3
		230.0	7.75	1389	1485	47.29	0.836	44.9	78.0
		230.0	8.24	1456	1445	46.50	0.800	41.0	76.8
		230.0	8.71	1517	1402	45.40	0.758	37.3	75.7
		230.0	9.16	1568	1355	43.86	0.708	33.7	74.4
		230.0	9.58	1612	1304	41.36	0.642	29.7	73.2
		230.0	9.97	1649	1249	38.83	0.577	26.1	71.9
		230.0	10.34	1680	1189	35.91	0.508	22.6	70.6
		230.0	10.67	1703	1124	32.39	0.433	19.0	69.4
		230.0	10.98	1722	1053	28.75	0.360	15.6	68.2
		230.0	11.26	1737	978	25.33	0.295	12.7	67.1
		230.0	11.51	1746	897	21.31	0.228	9.7	65.9
		230.0	11.73	1751	809	17.20	0.166	7.1	64.9
		230.0	14.24	2355	716	22.75	0.194	6.1	71.9
		230.0	20.99	3748	623	36.88	0.274	5.4	77.7
		230.0	21.20	3796	516	38.19	0.234	4.6	77.9
		230.0	21.31	3819	399	36.23	0.172	3.4	77.9
		230.0	21.39	3829	278	34.53	0.114	2.2	77.8
		230.0	21.43	3833	146	32.79	0.057	1.1	77.8

DRAWING NO.

PAGE 7 of 8

3K994BG

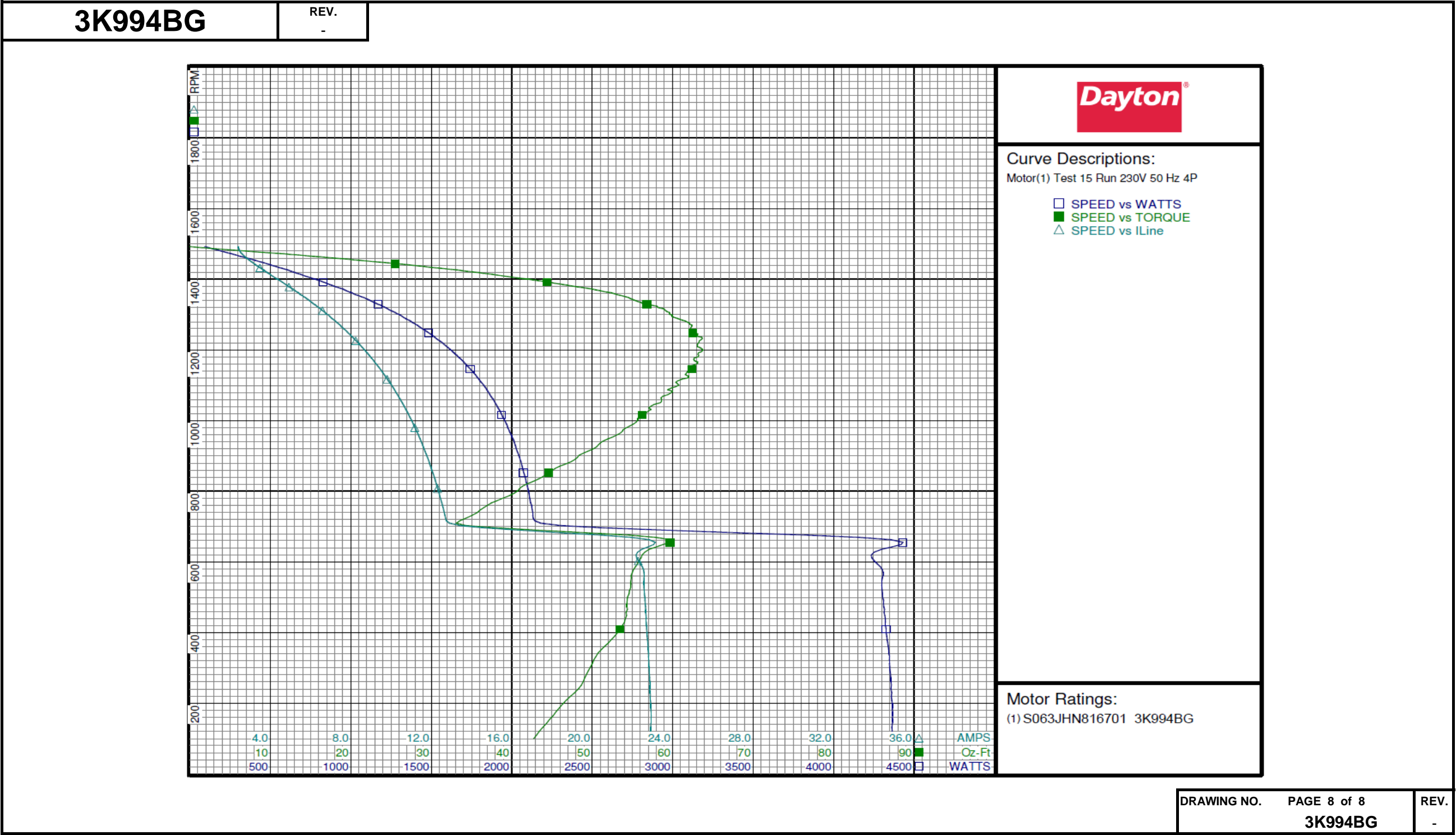
REV.

-

DRAWING NO.	PAGE 7 of 8	REV.
	3K994BG	-

Dayton Electric Mfg. Co. Lake Forest, IL 60045 USA

Performance Data



3K994BG

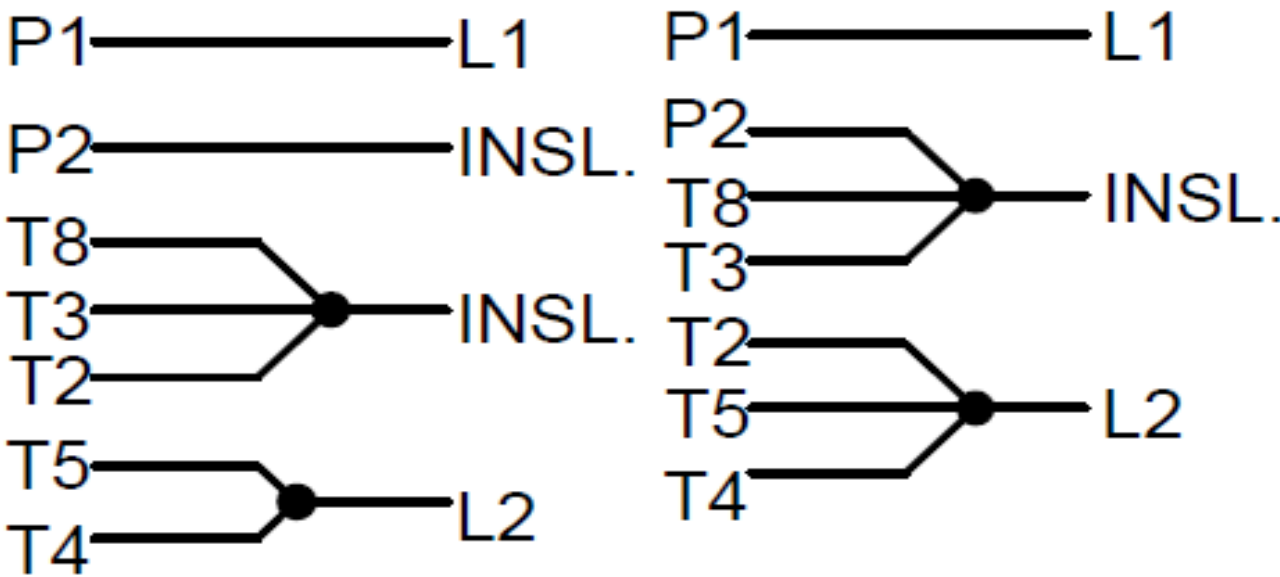
REV.
0

Disconnect Power Before Making Any
Electrical Connections or Changes

CONNECTION INFORMATION

HIGH VOLTAGE

LOW VOLTAGE



ROTATION: CCW L.E.
TO REVERSE ROTATION: INTERCHANGE
LEADS T5 AND T8

Dayton[®]**AUGER DRIVE MOTOR****HP:** 1/3**VOLTS:** 115/230**AMPS:** 5.2/2.6**RPM:** 1725 & 1425**DUTY:** CONT**SF:** 1.0**KVA CODE:** R**ENCL:** TENV**THERMALLY PROTECTED:** MANUALMFG. NO. PROT. CODE: 01571AVG. F.L.
EFF.**MTR REF:** S63XWJHN-8167**50 HZ AMPS:** 6.0/3.0Part
No **3K994BG****PH:** 1**HZ:** 60&50**FR:** 56YZ**INS CL:** B**AMB:** 40 °C**SFA:** 5.2/2.6**Disconnect Power Before Making Any
Electrical Connections or Changes****CONNECTION INFORMATION****HIGH VOLTAGE****LOW VOLTAGE**

P1 ——— L1

P2 ——— INSL.

T8 ——— INSL.

T3 ——— INSL.

T2 ——— INSL.

T5 ——— L2

T4 ——— L2

P1 ——— L1

P2 ——— INSL.

T8 ——— INSL.

T3 ——— INSL.

T2 ——— L2

T5 ——— L2

T4 ——— L2



E37403



258501

ROTATION: CCW L.E.
TO REVERSE ROTATION: INTERCHANGE
LEADS T5 AND T8**Mfd for Dayton Electric Mfg. Co., Lake Forest, IL 60045 USA****Made in Mexico**